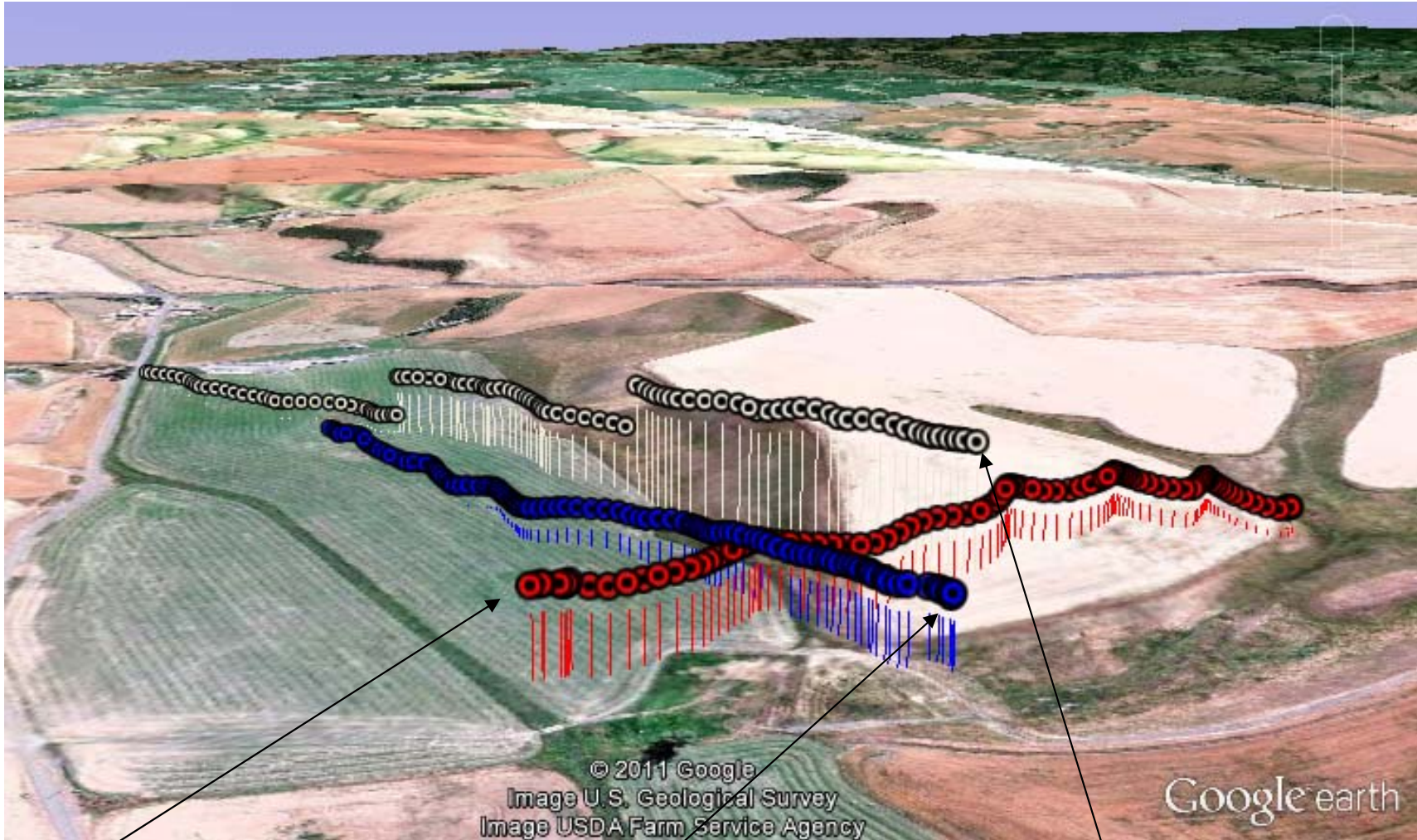




“Lone Tree” Launch Site – 2011 Test Flights

May 14th, June 11th, and October 1st Recovery Trajectories



May 14th
7554 Booster – Aerotech I211
“Thunderstorm Intercept”
Apogee: 2,706 Feet

June 11th
9875 Booster – CTI I170
Apogee: 2,211 Feet

October 1st
7554 Booster – Aerotech I211
Apogee: 2,354